



Traditional & Contemporary

COMPOSITE DOOR COLLECTION



Why choose an **XtremeDoor** composite door?

Composite doors offer the look and feel of timber doors but with added security features and energy saving properties helping to keep those energy bills down.

They have a high-density foam core offering excellent strength and thermal performance, plus a durable Glass Reinforced Plastic (GRP) skin to protect from the elements.

GRP is the same materials that is used to make wind turbines - demonstrating just how tough it really is!

And unlike timber, composite doors are incredibly low maintenance - an occasional wipe over with a damp cloth will restore it to it's original finish.



Key to Glazing Icons

- ▲ These doors feature our Triple Glazed options.
- Obscure glass choice not required.
- These require obscure patterned backing glass. See 'Textured Glass Options' on page 39.

All images portrayed in this brochure should not be reproduced without specific written permission from the manufacturer. Images, designs and colours are for illustrative purposes only and are only as accurate as the printing process allows.

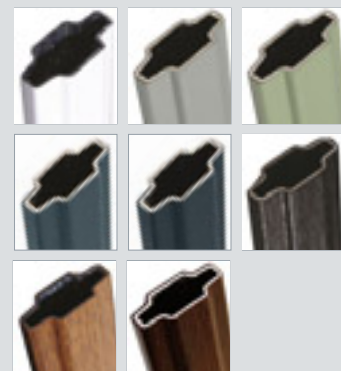
Rosewood and Light Oak are available both sides. The wood effect finishes on the door and outer frame differ slightly due to the nature of different materials involved.

All information within this brochure is provided for guidance only and is given in good faith, but without warranty or guarantee of any kind, whether implied or expressed. Our policy is to continually improve products, therefore methods, materials and changes of specification may be made from time to time without prior notice.

Georgian Bar Options

Georgian bars are available in: White, Agate, Chartwell Green, Slate, Anthracite, Black, Light Oak and Rosewood foil finishes.

All have white on the reverse except for Light Oak and Rosewood which is on both sides.





Xtremedoor Keeping the heat in and intruders out

VS **OtherDoor**

How does XtremeDoor compare with industry standard specifications?

4mm GRP Skin

Industry Standard is 2mm or less

- > Doc Q Compliant
- > High-impact Resistance
- > Low Maintenance and UV Stable

5 Hook Lock[★]

Industry Standard is 2 Hook

- > Increased Security
- > Anti - Snap, Pick, Drill & Bump Cylinders

Triple Seal Frame

Industry Standard is Dual Seal

- > 2 Brush - 1 Bubble
- > Tighter Seal - Can withstand Hurricane Force Winds
- > Weatherproof - Eliminating drafts
- > Low U-values - Keeps the heat in

25 Year Hardware Guarantee

Industry Standard is 12 Months

- > 25 Year Surface Finish Guarantee
- > Corrosion Proof
- > Salt Spray Tested

£3,000 Money-Back Guarantee



Scan the QR code to register your guarantee

We're so confident of our multi-point locking mechanism, we offer a £3,000 money-back guarantee in the unlikely event of a break-in where the lock is the point of entry.

★ Long Bar Pull Handles and Cylinder Pulls come with a 3-point dead bolt auto-fire lock

Even the Police Struggle to Force Entry Through an **XtremeDoor?**



It takes time and specialist equipment to break through an XtremeDoor.

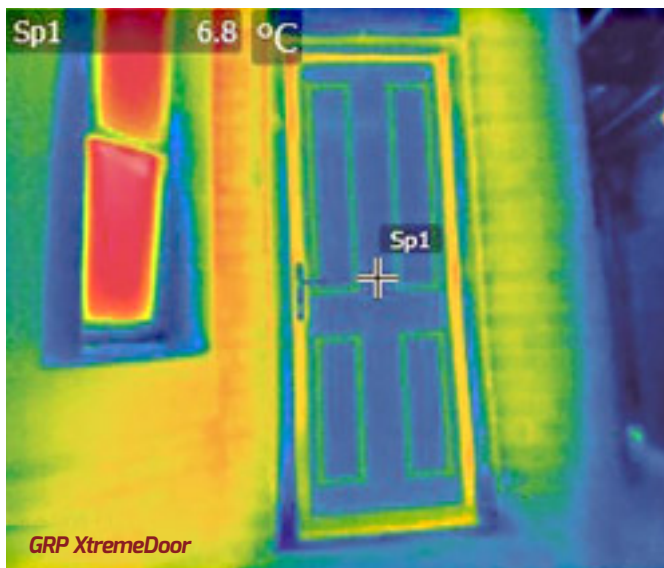
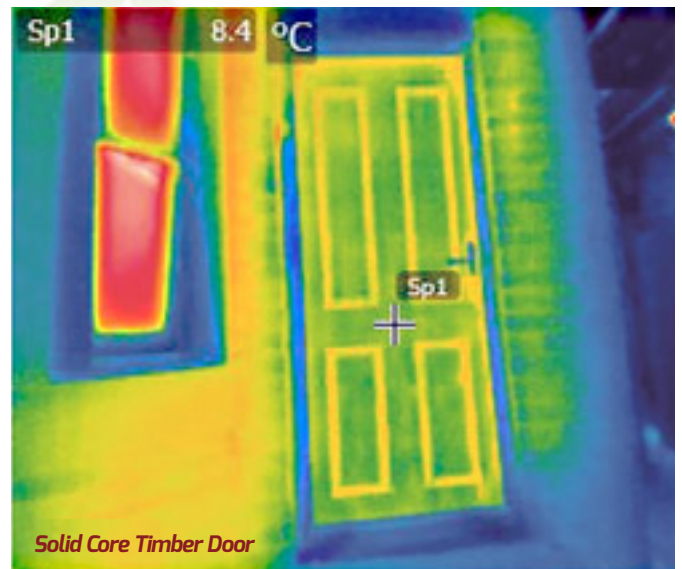
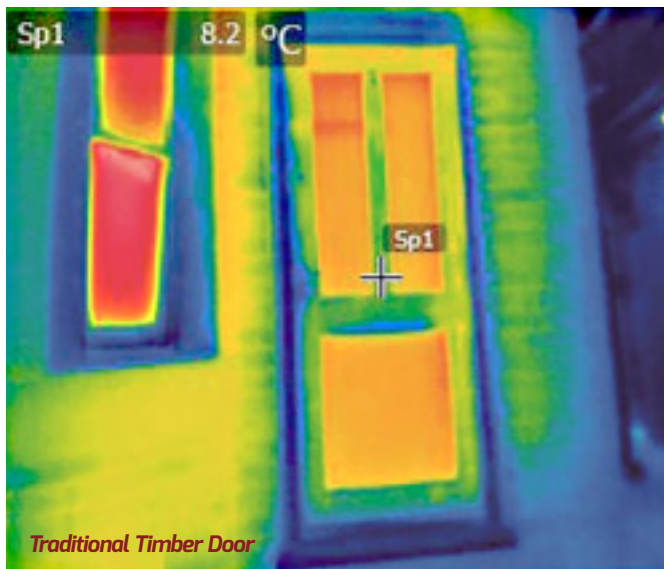
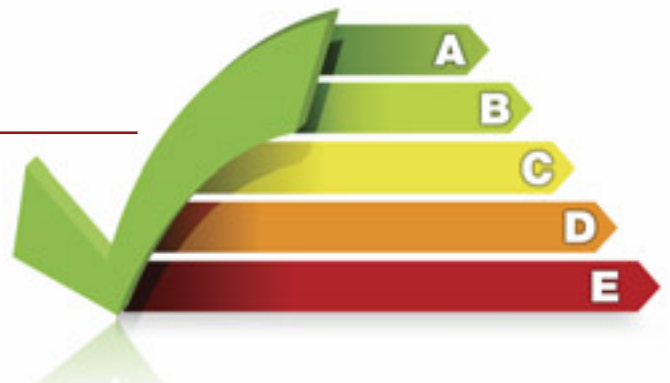
That's because an XtremeDoor has a rigid polymer subframe, a high density CUC-free polyurethane foam core, impact-resistant GRP skin, a five point locking system and an anti-snap, bump, pick and drill cylinder fitted with a guard for ultimate security.

Don't just take our word for it - the XtremeDoor has PAA24 2022 Enhanced Security accreditation and Secured by Design endorsement, so you can rest assured your home is safe.



Energy Efficient

Composite doors are more thermally efficient than either timber or PVC, and our doors are manufactured to the highest quality standards, making them more thermally efficient by design and helping to reduce those energy bills!



Unbeatable U-Values from 0.87W/m²K*

Four different door styles are shown in a row: Edwardian Solid, Tudor Solid, Cottage Solid, and Solid.

A 'U-value' is the overall heat transfer co-efficient that describes how well a building element conducts heat. A low U-value usually indicates high levels of insulation.

In the thermal images, the red, yellow and green areas show high levels of heat escaping from a traditional door.

By contrast, the dark blue areas on the XtremeDoor indicate excellent insulating qualities. The warm foam

core allows the door to have a significantly better 'U-value' than traditional timber doors, PVC skinned timber doors and steel doors, and our entire range meets with the requirements of the current Building Regulations.

There are various upgrades to glass options which increase the thermal performance of the door. The combination should keep your home warmer and could help reduce your energy bills.

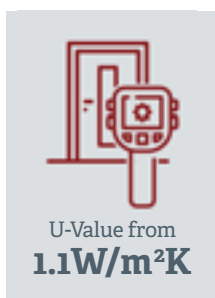
* Based on solid doors. For glazed doors, please refer to their relevant pages.

York

A classic design with two simple glass panels.
Suitable for any modern or traditional style of property.



Feature Door
Colour: Agate Grey
Glass: Titanium ▲●





Colour: Chartwell Green

Glass: Bohemia ■



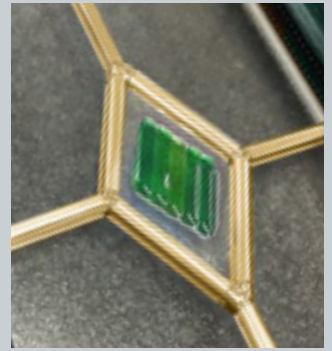
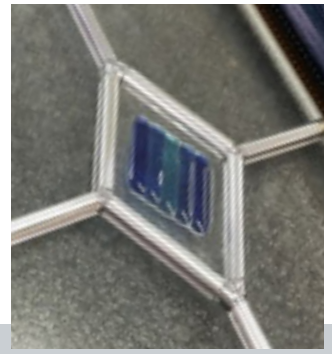
Colour: Anthracite

Glass: Kara Brass ▲ ●



Colour: French Blue

Glass: Blue Fusion ■



Our Fusion glass is available in either Blue or Green tile options and the choice of Zinc or Brass Camino



Left Door

Colour: Royal Magenta
Glass: Eternity ●



Right Door

Colour: Duck Egg Blue
Glass: Toledo ●



Glass: Olympic



Colour: Light Pink

Glass: Olympic ▲ ●



Colour: Black

Glass: Knightsbridge ▲ ●



Left Door
Colour: Cream
Glass: Etch Border ■



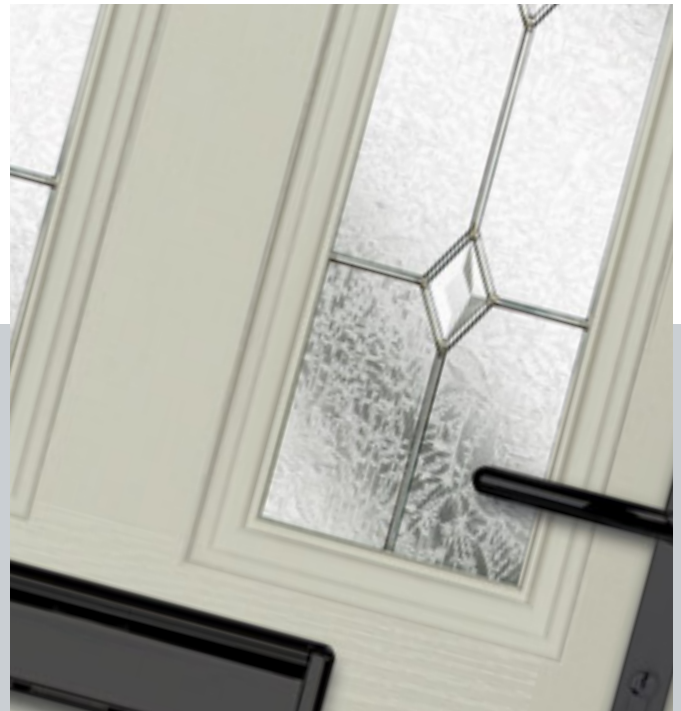
Right Door
Colour: Moondust
Glass: Elderton ●



Colour: Green
Glass: Etch Splendour ■



Colour: Anthracite
Glass: Fleur ■



Glass: Kara Zinc



Left Door
Colour: Blue Green
Glass: Oasis ▲ ●



Right Door
Colour: Pebble
Glass: Kara Zinc ▲ ●

Cambridge & Windsor

With its arched or raked panel tops, the Cambridge or Windsor will most certainly, add a touch of distinction to properties of any age.



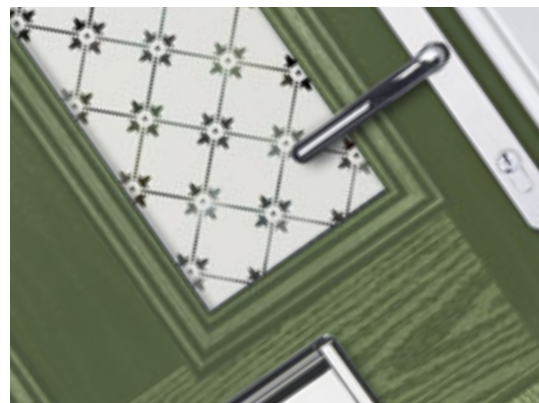
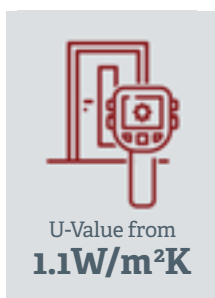
Cambridge



Windsor



Feature Door
Colour: Reed Green
Glass: Fleur





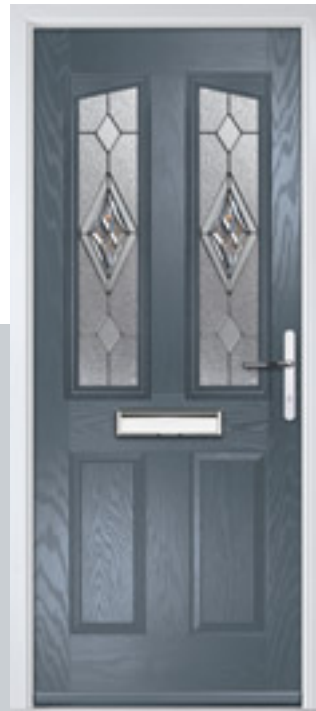
Colour: Black

Glass: Kara Brass ▲ ●



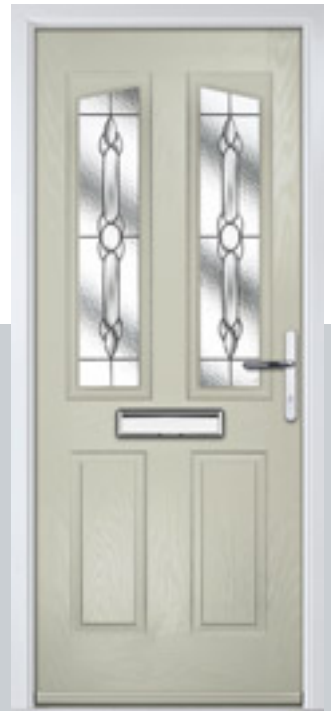
Colour: Duck Egg Blue

Glass: Elderton ●



Colour: Slate

Glass: Knightsbridge ▲ ●



Colour: Pebble

Glass: Bohemia ■



Can't see the colour you really want?



No problem!

All doors and frames can be sprayed in any Classic RAL* of your choice.

*Additional costs and lead times apply. Fluorescent and Metallic colours excluded.

Left Door

Colour: Agate

Glass: Olympic ▲ ●

Right Door

Colour: Chartwell Green

Glass: Oasis ▲ ●

Georgian

Featuring a distinctive semi-circular glazing panel, these stately door designs echo the classic architecture of the Regency period.



Georgian 1



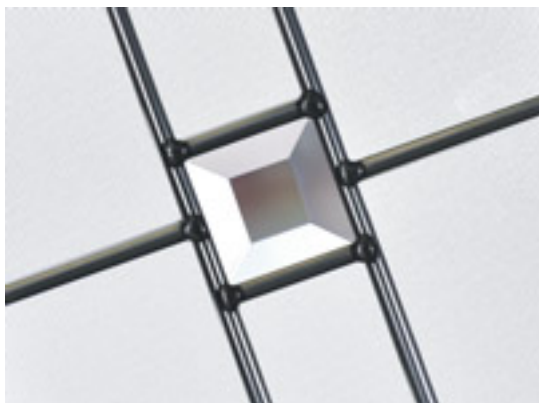
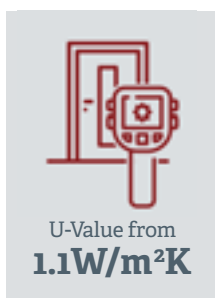
Georgian 1 Bar



Georgian 3



Feature Door
Colour: Slate
Glass: Olympic ▲ ●





Colour: Green

Glass: Silvaner ■



Colour: Cream

Glass: Gavalas ■



Colour: Moondust

Glass: Etch Border ■



Colour: Blue

Glass: Georgian Bar ■



For our full range of door hardware & colour finish options...

See Page 37



Left Door

Colour: Chartwell Green
Glass: Prism ●
(only available in Chartwell Green)



Right Door

Colour: Black
Glass: Diamond Classic ▲ ●

Edwardian

A stylish, traditional door offering varying degrees of privacy to street-front properties or those with shared access.



Edwardian Solid



Edwardian 2



Edwardian 4



Feature Door
Colour: Blue Green
Glass: Oasis ▲ ●





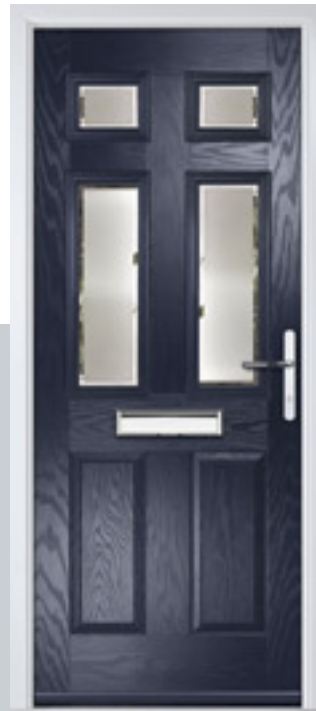
Colour: Duck Egg Blue

Glass: Silvaner ■



Colour: Chartwell Green

Glass: Diamond Classic ▲ ●



Colour: Blue

Glass: Etch Border ■



Colour: Moondust

Glass: Diamond Classic ▲ ●



For our full range of door hardware & colour finish options...

See Page 37



Left Door

Colour: Pebble

Glass: Olympic ▲ ●

Right Door

Colour: Anthracite

Glass: Titanium ▲ ●



Victorian & Cottage Half

The Victorian features a large single glass panel to allow plenty of light into those spacious turn-of-the-century hallways.



Victorian



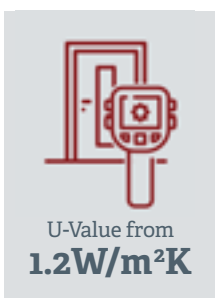
Victorian Bar



Cottage Half



Feature Door
Colour: Duck Egg Blue
Glass: Elderton ●





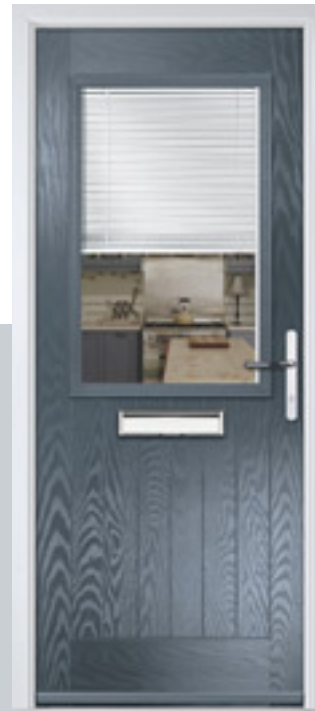
Colour: Royal Magenta

Glass: Rioja ■



Colour: Agate

Glass: Titanium ▲ ●



Colour: Slate

Glass: Enclosed Venetian Blind



Colour: Cream

Glass: Etch Splendour ■



Georgian Bar

Available in:
White, Chartwell
Green, Agate, Slate,
Anthracite, Black,
Light Oak and
Rosewood Foil
Finishes.



Left Door

Colour: Anthracite

Glass: Georgian Bar ■



Right Door

Colour: Chartwell Green

Glass: Etch Border ■

Regal

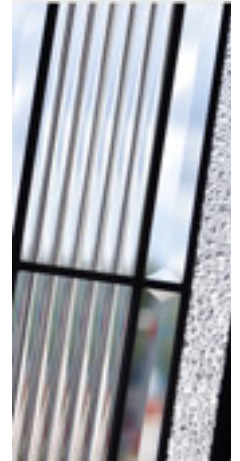
Extended
Lead Time

With its American style, large glazed feature panel, the Regal door is proving to be just as popular here in the UK as it is 'over the pond'.



Regal

Regal Bar



U-Value from
1.2W/m²K

Feature Door
Colour: Black
Glass: Titanium ▲ ●



Colour: Slate
Glass: Reflections ▲ ●



Colour: Moondust
Glass: Bohemia ■



Colour: Blue Green
Glass: Simplicity Zinc ▲ ●



Colour: Agate
Glass: Georgian Bar ■

Tudor

Extended
Lead Time

Reminiscent of the door styles of the 1930's, the Tudor door is also available as a solid door option as well as a glazed version.



Tudor



Tudor Solid



U-Value from
1.3W/m²K

Feature Door

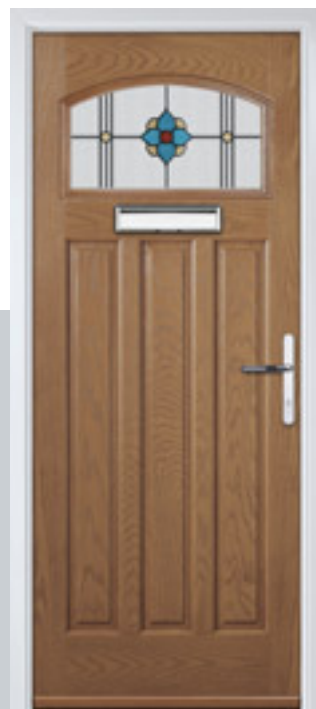
Colour: Anthracite

Glass: Simplicity Brass ▲●



Colour: Chartwell Green

Glass: Reflections ▲●



Colour: Light Oak

Glass: Oasis ▲●



Colour: Green

Glass: Havana ●




Colour: Agate

Glass: Etch Border ■

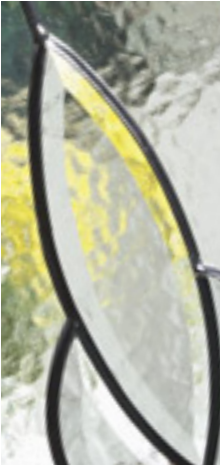
Devon

Another design which allows plenty of light into reception rooms or directly into a kitchen.

U-Value from
1.2W/m²K

Feature Door
Colour: Anthracite
Glass: Royal Sparkle ■



Colour: Agate
Glass: Mosel ■



Colour: Black
Glass: Mirambello ■



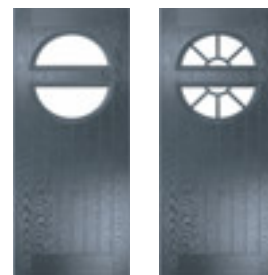
Colour: Duck Egg Blue
Glass: Spirit ■



Colour: Rosewood
Glass: Glazed ■

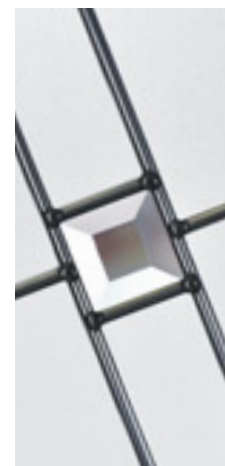
Georgian 2

Affording a little more light, the two semi-circular panels create a modern distinctive style door.



Georgian 2

Georgian 2 Bar



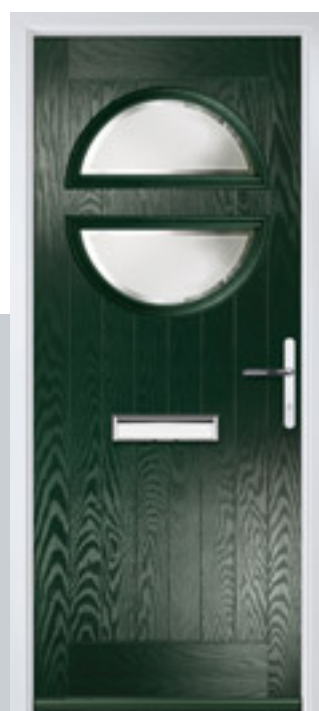
Feature Door
Colour: Blue Green
Glass: Olympic ▲●



Colour: Moondust
Glass: Silvaner ■



Colour: Blue
Glass: Diamond Classic ▲●



Colour: Green
Glass: Etch Border ■



Colour: Chartwell Green
Glass: Fretted Cassette ■

Cottage 1 & Diamond

Unlike other 'cottage' doors in the market, our cottage door has a unique 'offset-etched detailing' and comes in two glazing styles.



Cottage Solid



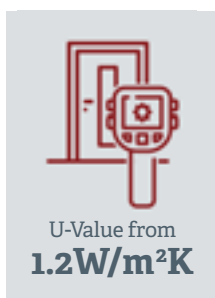
Cottage Diamond



Cottage 1



Feature Door
Colour: Pebble
Glass: Diamond Classic





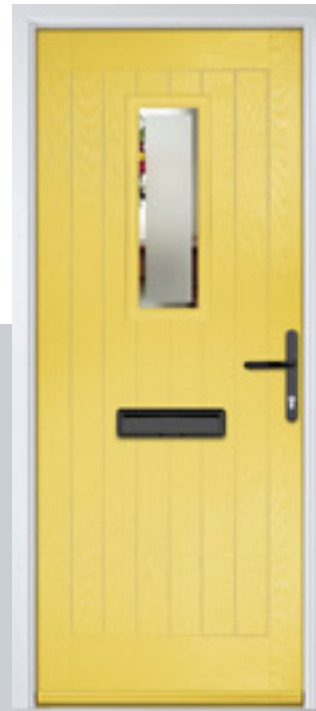
Colour: Chartwell Green

Glass: Titanium ▲ ●



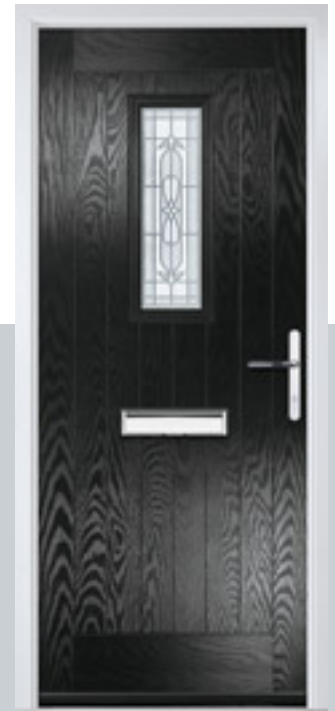
Colour: Blue Green

Glass: Olympic ▲ ●



Colour: Signal Yellow

Glass: Etch Border ■



Colour: Black

Glass: Etch Splendour ■



For our full range of door hardware & colour finish options...

See Page 37

Left Door
Colour: Duck Egg
Glass: Oasis ▲ ●

Right Door
Colour: Light Pink
Glass: Bullion ●

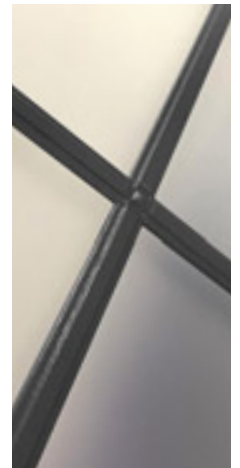
Farmhouse Square

This design is a take on the classic cottage style door and will suit those looking for a rural look.



Square

Square Bar



U-Value from
1.1W/m²K

Feature Door
Colour: Chartwell Green
Glass: Georgian Bar



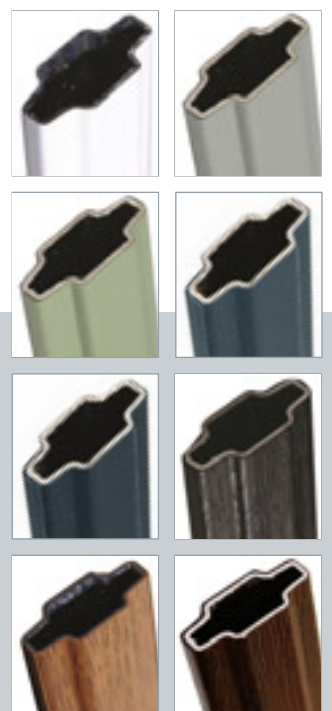
Colour: Reed Green
Glass: Glazed ■



Colour: Moondust
Glass: Satin



Colour: Slate
Glass: Georgian Bar ■



Available in: White, Chartwell Green, Agate, Slate, Anthracite, Black, Light Oak and Rosewood Foil Finishes.

Farmhouse 1

Farmhouse 1 is a simple design that is sure to evoke the countryside look in your property.



U-Value from
0.98W/m²K

Feature Door
Colour: Moondust
Glass: Silvaner ■



Colour: Pebble
Glass: Olympic ▲ ●



Colour: Black
Glass: Etch Border ■



Colour: Duck Egg
Glass: Titanium ▲ ●



Colour: Slate
Glass: Diamond Classic ▲ ●

Cottage 4

The Cottage 4 is a very popular contemporary door design with the choice of lock, centred or hinge side glazing positions.

Glazed
Lock Side
as Standard



Right Option



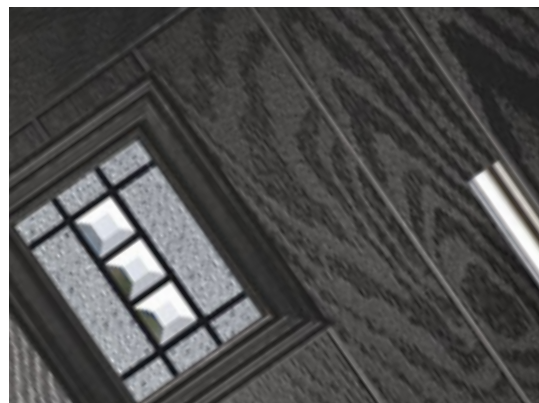
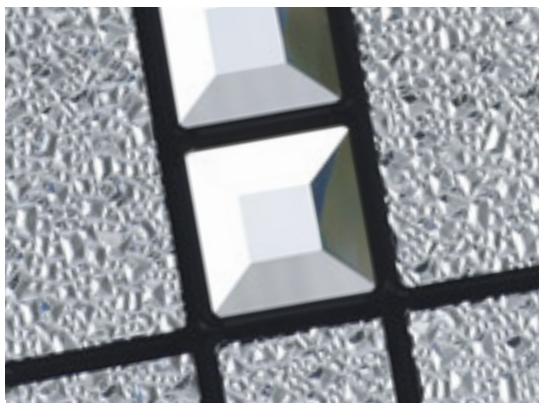
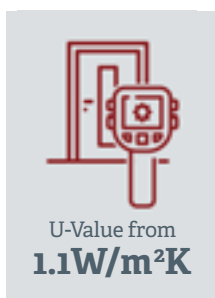
Centre Option



Left Option



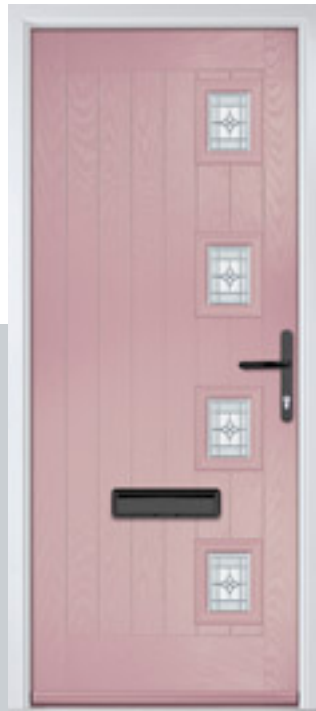
Feature Door
Colour: Black Ash
Glass: Titanium ▲ ●





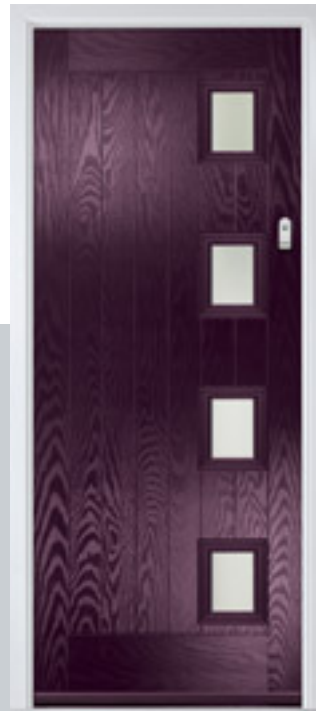
Colour: Slate

Glass: Diamond Classic ▲ ●



Colour: Light Pink

Glass: Silvaner ■



Colour: Royal Magenta

Glass: Satin



Colour: Pebble

Glass: Glazed ■



Left Door

Colour: Agate

Glass: Olympic ▲ ●



Right Door

Colour: Blue Green

Glass: Etch Border ■

Jacobean

The inline slim glazing details on the Jacobean door is inspired by the contemporary European door look.



Feature Door
Colour: Slate
Glass: Satin





Colour: Agate

Glass: Silvaner ■



Colour: Royal Magenta

Glass: Titanium ▲ ●



Colour: Chartwell Green

Glass: Diamond Classic ▲ ●



Colour: Blue Green

Glass: Glazed ■



Left Door

Colour: Moondust
Glass: Olympic ▲ ●

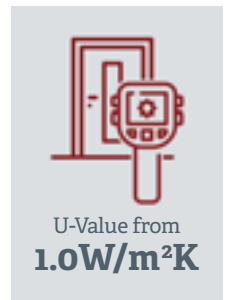


Right Door

Colour: Anthracite
Glass: Etch Border ■

Napoli

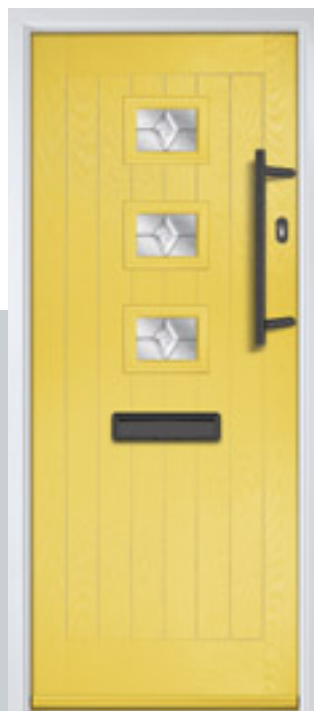
A bold and contemporary design
with a subtle Art Deco influence.



Feature Door
Colour: Anthracite
Glass: Satin



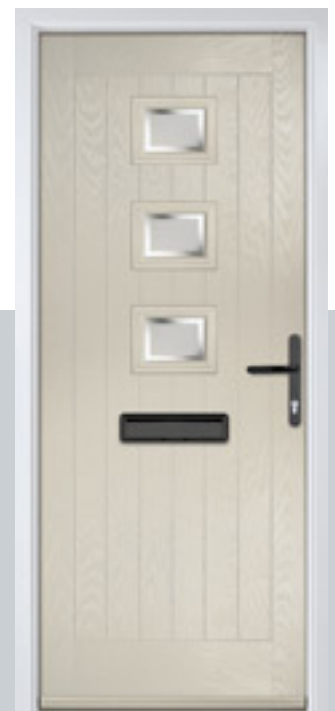
Colour: Duck Egg
Glass: Olympic ▲ ●



Colour: Signal Yellow
Glass: Diamond Classic ▲ ●



Colour: Slate
Glass: Titanium ▲ ●



Colour: Cream
Glass: Etch Border ■

Stuart

A simple design with a single offset or central glazed panel providing a contemporary and modern statement.



Right Option



Centre Option



Left Option

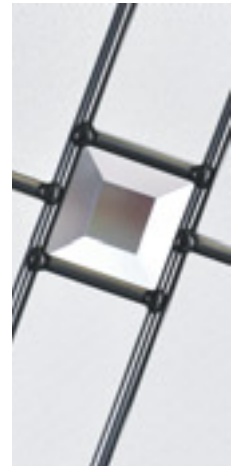


U-Value from
1.1W/m²K

Feature Door

Colour: Moondust

Glass: Olympic ▲ ●



Colour: Black

Glass: Etch Border ■



Colour: Pebble

Glass: Titanium ▲ ●



Colour: Blue Green

Glass: Satin



Colour: Chartwell Green

Glass: Glazed ■

Verona

Extended
Lead Time

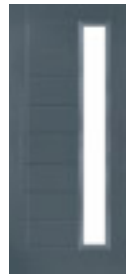
With its contemporary linear etched detailing, Verona is a stunning door available with glazing detail or as a solid door.



Solid



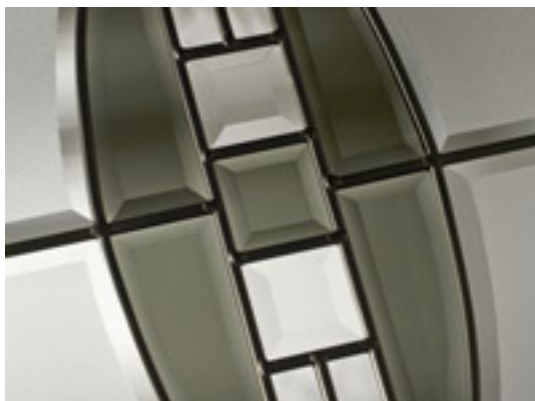
Left Option



Right Option



Feature Door
Colour: Black Ash
Glass: Reflections ▲ ●





Colour: Slate

Glass: Olympic ▲ ●



Colour: Duck Egg Blue

Glass: Satin



Colour: Royal Magenta

Glass: Glazed ■

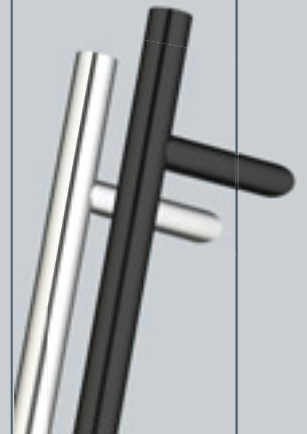


Colour: Anthracite



**Modern
pull bars in
a choice of
sizes and
finishes...**

See Page 37



Left Door

Colour: Moondust

Glass: Titanium ▲ ●

Right Door

Colour: Agate

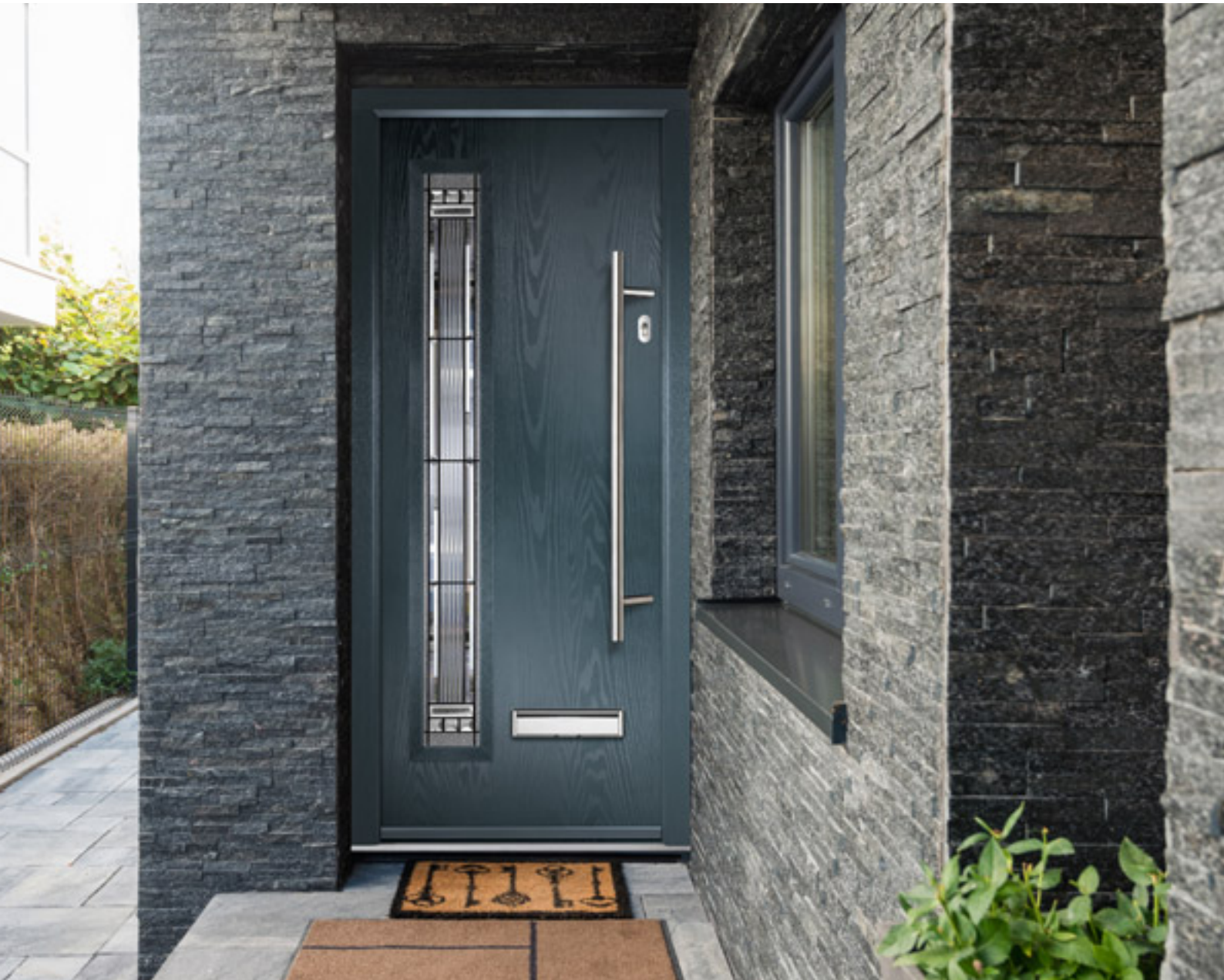
Glass: Etch Border ■



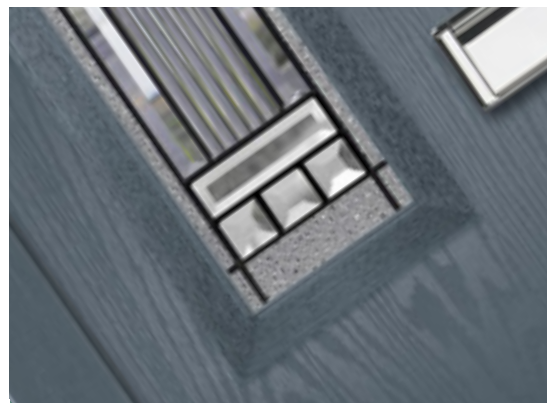
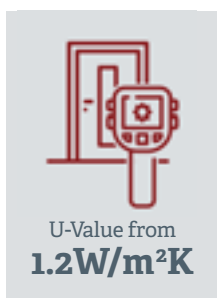
Oslo

Extended
Lead Time

With a flush grained surface finish and flat glazing cassette, the Oslo has a clean modern style.



Feature Door
Colour: Slate
Glass: Titanium ▲●





Colour: Anthracite
Glass: Olympic ▲ ●



Colour: Chartwell Green
Glass: Titanium ▲ ●



Colour: Black Ash
Glass: Satin ■



Colour: Moondust
Glass: Glazed ■



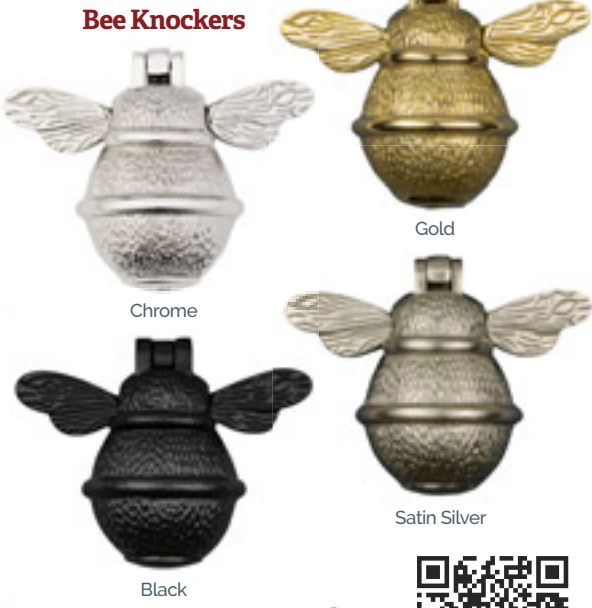
Left Door
Colour: Agate
Glass: Etch Border ■



Right Door
Colour: Pebble
Glass: Reflections ▲ ●

Door Furniture

Add the finishing touches to your XtremeDoor with our wide range of door furniture including: letterplates and spyholes, as well as decorative urns/slimline urns. There's also a selection of finishes to choose from to enhance the colour and style of your XtremeDoor.



Care for
your Bee

Depending on the door style and knocker style, some items are supplied loose.

Door Furniture

Premium Letterplates



Chrome

Gold

Black

White

Satin Silver

Standard Letterplates

Available in: Chrome, Gold, Black and White



Door Pulls



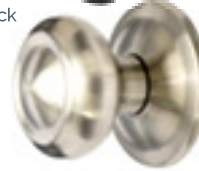
Chrome



Gold



Black



Satin Silver

Long Pull Handles

Available in: 600mm, 1200mm and 1800mm

Black available in 600mm and 1200mm only



Traditional Range



Antique Black

Spyholes

Spy viewers are supplied loose when a long bar handle is chosen that will block the view



Cylinder Pulls

Available in: Chrome, Gold, Black & Satin Silver

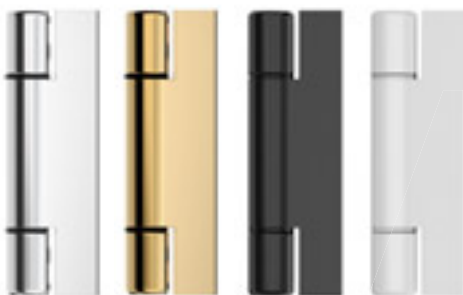


Escutcheons

Available in: Satin Silver & Black



Hinges



Chrome

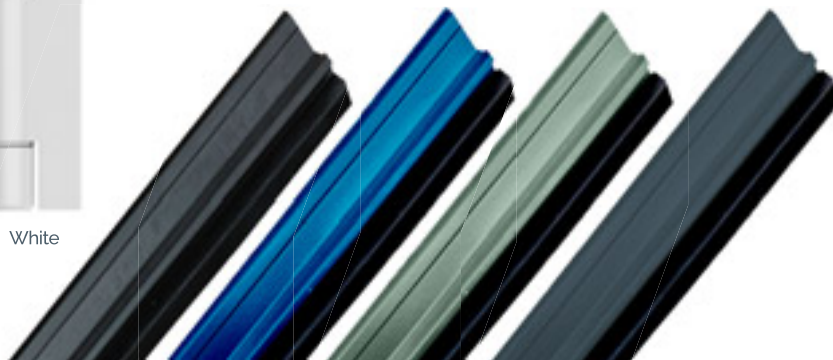
Gold

Black

White

Coloured Drip Bars

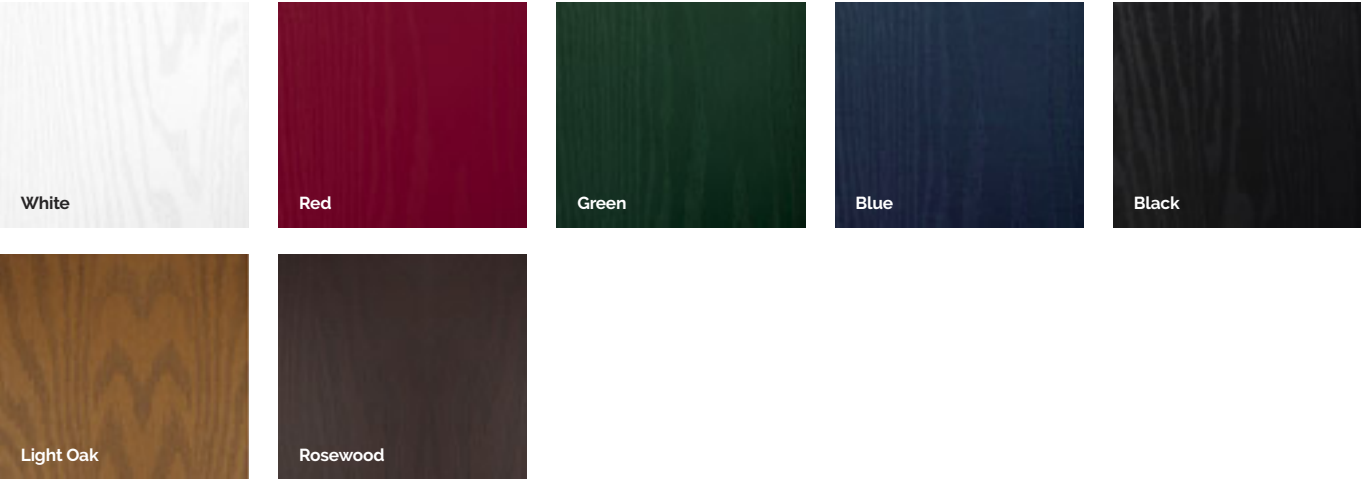
Available in: Anthracite Grey, Black, Blue, Chartwell Green, Cream, Duck Egg Blue, French Blue, Green, Moondust, Red, Royal Magenta and Slate



Door Colour Options

Doors are supplied with white internal colour as standard, however coloured both sides is available on request. RAL numbers are for reference only. Different materials will give different shade variations when painted with the same RAL. Foiled frames and door slabs may appear slightly different due to the nature of the materials and light reflecting from them.

Standard Colours



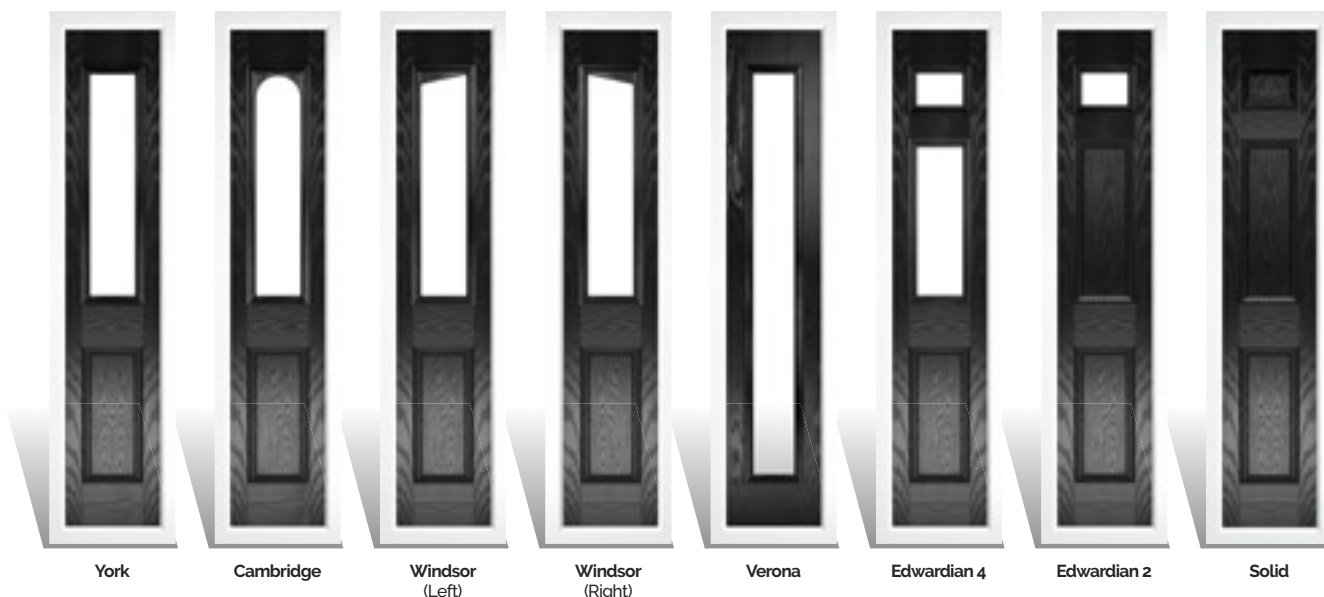
Premium Colours



Rosewood, Light Oak and Premium Colours have a colour guarantee of 5 years.

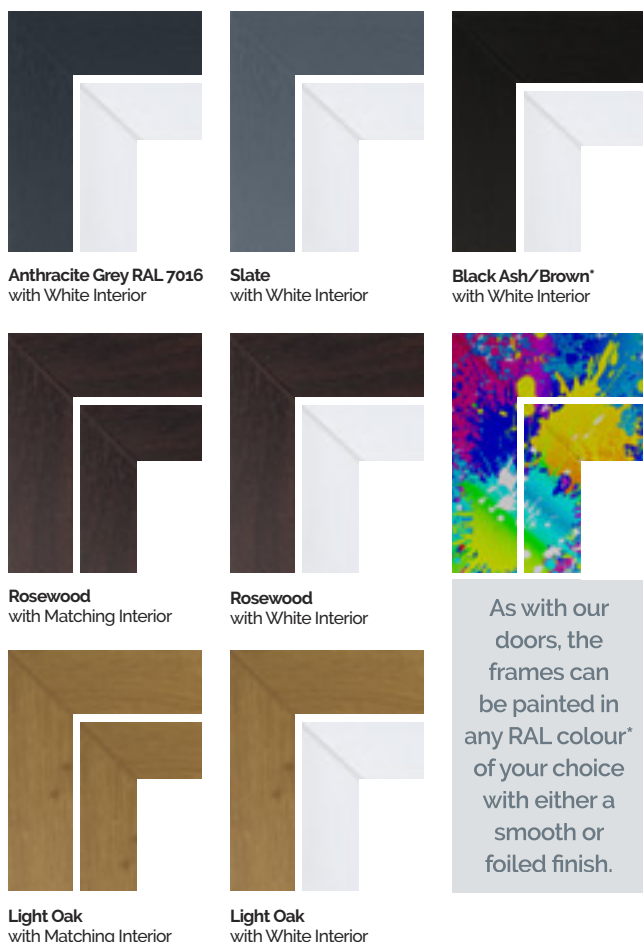
Composite Sidelight Options

For homes with larger openings, we offer a range of sidelight options to complement your door.



Colour Foiled Frames

Frames can be supplied coloured both sides on request. Frames can also be sprayed to any RAL number on request.



As with our doors, the frames can be painted in any RAL colour* of your choice with either a smooth or foiled finish.

* The foiled Black Ash/Brown frame may appear lighter than the black door in direct sunlight

Textured Glass Options

There are lots of textured glass options to choose from, helping you maintain privacy in your home.



* Glass names are the trademark of Pilkington plc. Images are copyright of Pilkington plc. and reproduced by courtesy.

Design your perfect XtremeDoor online

www.xtremedoor.co.uk



Upload your XtremeDoor for us to share



Doors are supplied with white internal colour as standard, however coloured both sides is available on request.
RAL numbers are for reference only. Different materials will give different shade variations when painted with the same RAL.
Foiled frames and door slabs may appear slightly different due to the nature of the materials and light reflecting from them.